

**ANDREW MOORE**  
*Dirt Meridian*

Friday, February 5 — Saturday, April 16  
Opening Reception Friday, February 5th, 6-8 pm

**WILLIAM KLEIN**  
*Paris + New York + Roma*

Artist Talk and Book Signing with Andrew Moore  
Saturday, February 6th at 11 am

**MAUDE SCHUYLER CLAY**  
*Mississippi History*

Artist Talk and Book Signing with Maude Schuyler Clay  
Thursday, March 10th, 6-8 pm

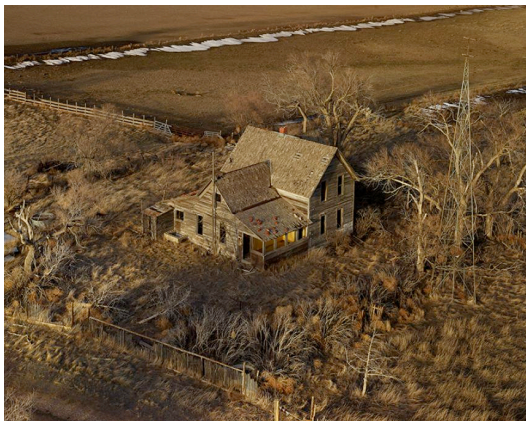
**ATLANTA. January 19, 2016.** Jackson Fine Art presents two new exhibitions from renowned photographers **Andrew Moore** and **William Klein**, two artists distinguished by their ability to astutely transcribe the essence of a place in all its complexity. Andrew Moore's *Dirt Meridian* exhibition features a selection of the photographs Moore began taking along the Hundredth Meridian in 2005, strikingly documenting the diverse terrain and rural communities characteristic of that region. In William Klein's *Paris + New York + Roma*, classic silver gelatin and chromogenic prints by one of the leading photographers of the twentieth century capture the exuberance and romance of three of the world's greatest cities and the faces of those who inhabit them.

Also on display in the viewing room will be photographs by **Maude Schuyler Clay**, in celebration of Stiedl's November, 2015 publication of *Mississippi History*. Schuyler's intimate color portraits, taken over the course of 30 years in her native Mississippi, comprise what Richard Ford calls "a personal photographic history...they bespeak the informality of life lived *in a place*."

On the evening of **Friday, February 5**, from **6-8 pm**, we'll hold our traditional opening reception with Andrew Moore and Maude Schuyler Clay in attendance. On **Saturday, February 6 at 11am**, Andrew Moore will give an artist talk about the *Dirt Meridian* project, followed by questions and a book signing with the artist.

**Maude Schuyler Clay** returns for a book signing and artist talk **Thursday, March 10**, from **6-8pm**.

In *Dirt Meridian*, Andrew Moore turns to the High Plains of North Dakota, South Dakota and Nebraska in a series of stunning, large-format photographs. The Hundredth Meridian, the longitude that neatly divides the U.S. into East and West, traverses America's so-called flyover country, those sparsely populated landscapes between the urban centers on either coast. Other parts of the meridian cross contentious zones such as the heavily fracked Bakken formation in North Dakota.



**ANDREW MOORE**  
*The Yellow Porch, Sheridan County, Nebraska, 2011*



**ANDREW MOORE**  
*Edgar Simon, Pennington County, South Dakota, 2014*

**Dirt Meridian** interweaves two stories: the myths and history of the vast, severe American High Plains alongside portraits of the people who live there today. Along the way, Moore worked with ranchers, farmers, crop dusters, game wardens, writers and historians to capture the mythology and reality of the High Plains. Many photographs in this exhibition were taken using a specially modified camera in a low-flying plane; the resulting pictures, with their literal bird's-eye view, offer a unique perspective on this quintessential, seemingly boundless American landscape.

**William Klein** applies his motto “no rules, no limits, no holding back” to three iconic cities—Paris, New York, and Rome — in a selection of black and white and color prints spanning his decades as one of the most influential and innovative artists in the medium. From iconic works for *Vogue* like *Smoke + Veil*, *Paris* and *Anouk Aimee*, 1961 to New York street photography, *William Klein: Paris + New York + Roma* illustrates the pioneering techniques that have distinguished Klein throughout his photographic career.

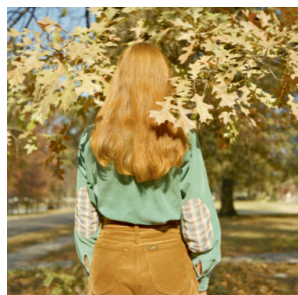


**WILLIAM KLEIN**  
*Anouk Aimee, Paris, 1961*

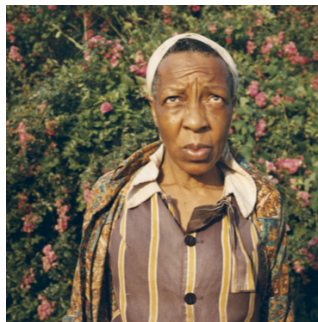


**WILLIAM KLEIN**  
*Candy Store, New York, 1955*

**Maude Schuyler Clay** started her color portrait series “Mississippi History” in 1975 when she came upon her first Rolleiflex 2¼ camera. At the time, she was living and working in New York and paid frequent visits to her native Mississippi Delta whose landscape and people continued to inspire her. Over the next twenty-five years, the project, which began as “The Mississippians,” evolved into an homage to Julia Margaret Cameron. A definitive pioneer of the art of photography, Cameron lived in Victorian England and began her photographic experiments in 1863, after receiving the gift of a camera. The expressive, allegorical portraits of her friends and family as well as her artful approach to capturing the essence of light are the driving forces behind Clay’s nostalgic recollection of carefree moments of family life and play in Mississippi in the 1980s and '90s.



**MAUDE SCHUYLER CLAY**  
*Bonnie Claire, Autumn Leaves*



**MAUDE SCHUYLER CLAY**  
*Lady on the Mitchener Place*



**MAUDE SCHUYLER CLAY**  
*Bill and Andra in Chair*

### About Andrew Moore

**Andrew Moore** was born 1957 in Old Greenwich, Connecticut. He is best known for his richly colored images of architectural and urban scenes particularly in Cuba, Russia, and Detroit. He teaches in the Photography M.F.A. program at the School of Visual Arts in New York City. His work is represented in the collections of the Whitney Museum of American Art, the Yale University Art Gallery, the Library of

Congress, the Israel Museum, the High Museum, the Eastman House and the Canadian Centre for Architecture. Moore has been the recipient of grants from the National Endowment for the Humanities, The New York State Council on the Arts, and several private foundations.

#### **About William Klein**

**William Klein** (b.1928) was born in New York City. After graduating early from high school, he began studying sociology at the City College of New York. In 1946 he joined the U.S. Army and was stationed in Germany, where he won his first camera in a poker game. After relocating to Paris in 1948, he continued his studies at the Sorbonne with the assistance of the G.I. Bill. At the time, his focus was abstract painting and sculpture. After studying with the French artist Fernand Léger, Klein's early career breaks came from two exhibitions in Milan, where he was discovered by the architect Angelo Mangiarotti. In 1954, Alexander Liberman—then the art director of American *Vogue*—asked to meet with Klein after seeing his kinetic sculptures in the Paris group show, *Le Salon des Réalités Nouvelles*. Thus began his foray into fashion photography, as well as his well-known photographic essays on various cities. Shooting for *Vogue* during a brief return to New York, Klein let loose on the city, taking fashion photography in a whole new direction. He captured the beautiful and the grotesque all within wide-angle and telephoto shots. Taking models out of the studio and onto the streets, his revolutionary techniques pioneered a new vision.

The recipient of numerous awards, Klein was honored with a Commander of Arts and Letters in France in 1989, the Medal of the Century by the Royal Photographic Society in London in 1999, the International Center of Photography Infinity Award for Lifetime Achievement in 2007, and the Outstanding Contribution to Photography Award at the 2012 Sony World Photography Awards. Works by William Klein are included the collections of many institutions, including The Metropolitan Museum of Art, The Museum of Modern Art, and the Whitney Museum of American Art in New York; the J. Paul Getty Museum in Los Angeles; and the Centre Pompidou in Paris. Klein continues to live and work in Paris, France.

#### **About Maude Schuyler Clay**

**Maude Schuyler Clay** was born in Greenwood, Mississippi. After attending the University of Mississippi and the Memphis Academy of Arts, she assisted the photographer William Eggleston. She moved to New York City and worked at LIGHT Gallery and then as a photography editor and photographer for *Esquire*, *Fortune*, *Vanity Fair*, and other publications. When she returned to live in the Mississippi Delta in 1987, she continued her color portrait work, for which she received the Mississippi Arts and Letters award for photography in 1988, and in 1992. In 1993, she began a series of black and white photographs of the Delta landscape. She received the Mississippi Art Commission's Individual Artist Grant in 1998. The University Press of Mississippi published her widely recognized monograph *DELTA LAND* in 1999, which received the Mississippi Arts and Letters Award in 2000. She was the Photography Editor of the literary magazine *The Oxford American* from 1998-2002. Her work is in the collections of The Museum of Modern Art, The Museum of Fine Arts, Houston, and The National Museum for Women in the Arts, among others. She continues to live in the Delta with her husband and three children.

#### **Publications**

Andrew Moore, *Dirt Meridian*. Damiani, September 2015. 140 pages. \$50.00.

Maude Schuyler Clay, *Mississippi History*. Steidl, November 2015. 144 pages. \$75.00.

#### **Contact**

To arrange interviews with Andrew Moore, Maude Schuyler Clay, or William Klein, and to request high resolution images, please contact Coco Conroy: coco@jacksonfineart.com.

Jackson Fine Art is located at 3115 East Shadowlawn Ave. NE, Atlanta, GA 30305. For more information about Jackson Fine Art and our artists, visit [jacksonfineart.com](http://jacksonfineart.com).